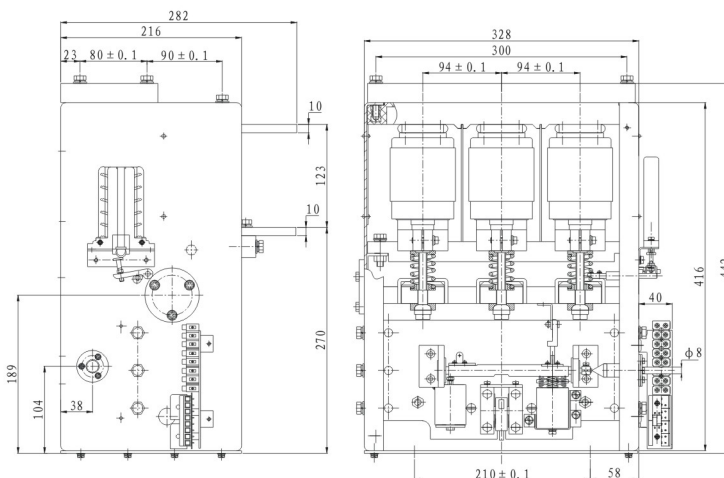




ZK1-1000/1.14



外形及安装尺寸图

ZK1-1000/1.14

ZK1-1000/1.14		
额定工作电流(A)	Rated Working Current (A)	1000
额定工作电压(V)	Rated Working Voltage (V)	1140
极限通断能力(KA)	Limited Making Capacity(KA)	16
固有分闸时间(ms)	Inherent Opening Time(ms)	≤30
合闸时间(ms)	Closing Time(ms)	≤100
合闸弹跳时间(ms)	Closing Bounce Time(ms)	≤2
机械寿命(次)	Mechanical Life (times)	2×10 ⁴
电寿命(次)	Electrical Life(times)	3×10 ³
参考重量(kg)	Weight(kg)	46
合闸电源电压(V)	Closing Power Supply Voltage(V)	220
欠压、分励直流电源 (V)	Under Voltage、Shunt Release DC Supply (V)	48
合闸功率(W) (瞬态)	Closing power(W transient)	4250
分闸功率(W)	Closing power(W)	48
欠压功率(W)	Under-voltage power(W)	5
辅助触点:三对常开,三对常闭	Auxiliary contact: Three NO, Three NC	
辅助触点容量	Auxiliary contact capacitance	Ue:AC380V Ie:10A