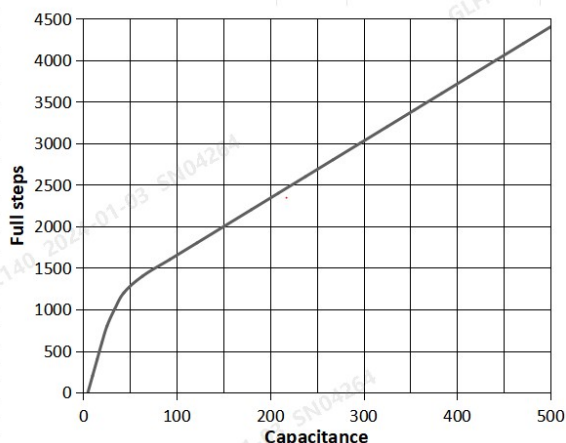
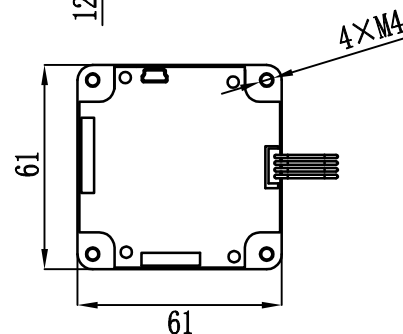
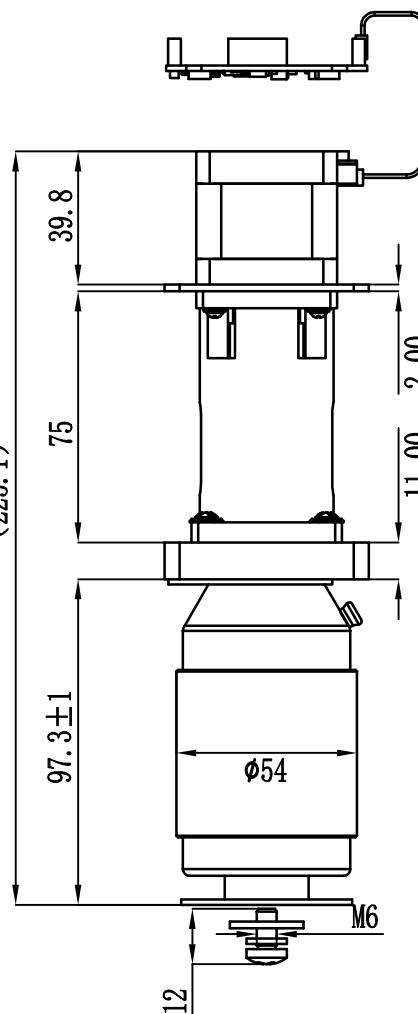
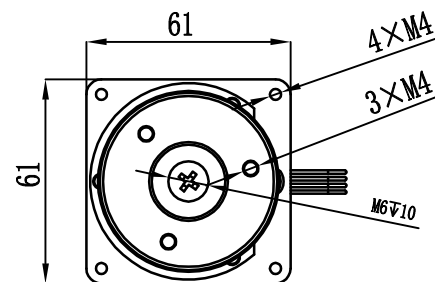


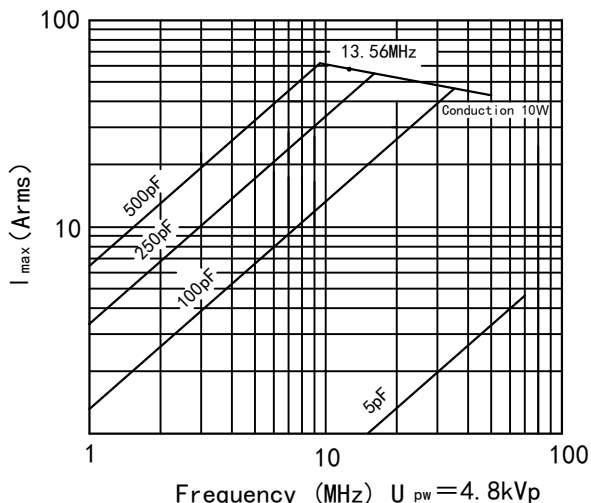
Data-Sheet-Motorized Vacuum Capacitor CKTBM500/8/57N1



| Specification | |
|--|-------------|
| Capacity C_{max} (nominal) | 500pF |
| Capacity C_{min} (nominal) | 5pF |
| Voltage (Peak Test U_{pt} /Peak Working U_{pw}) | 8kVp/4.8kVp |
| Capacity tolerance (linear Range) | $\pm 1\%$ |
| Max. Current I_{max} at 13.56MHz with | 57Arms |
| Conduction Cooling | 10W |
| Self Inductance | $\leq 10nH$ |
| Capacitance per 100 steps | 14.55pF |
| Net Weight | 1.2kg |
| Ground to variable end capacitance | $\leq 5pF$ |



I_{max} at 25 °C ambient and 125 °C surface temp. for convection and conduction (10w) cooling



UNLESS OTHERWISE SPECIFIED:

$\leq 30: \pm 0.5$ $30 \sim 400: \pm 1.2$ $\geq 400: \pm 2.5$ $\angle \pm 1^\circ$

Address: ST28 Xihu Road, Kunshan, Jiangsu Province, China
TEL: +86 (512) 36872110

Rev:00

Web: www.glvac.com
FAX: +86 (512) 36872122

Page 1/3

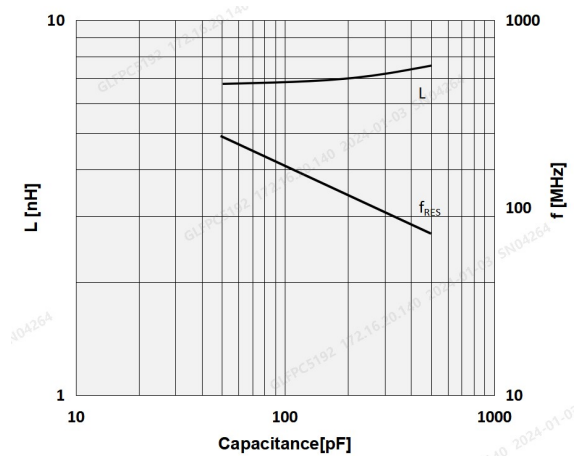
Issue: 3-Jan-2024

E-mail: e-sales@glvac.com
Zip Code: 215333

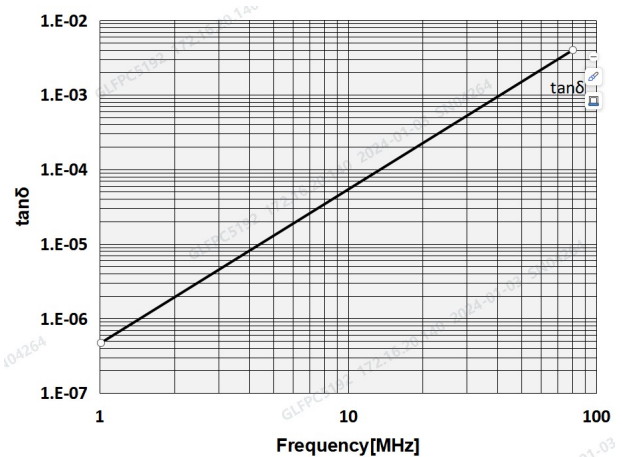
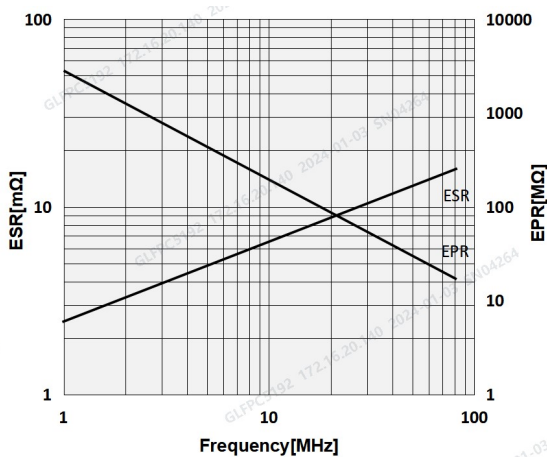
Data-Sheet-Motorized Vacuum Capacitor CKTBM500/8/57N1



| FullSteps | Nominal Capacitance[pF] | Tolerance |
|-----------|-------------------------|-----------|
| 0 | 5 | 1% |
| 1300 | 50 | 1% |
| 2000 | 150.8 | 1% |
| 2600 | 238.1 | 1% |
| 3200 | 325.4 | 1% |
| 3800 | 412.7 | 1% |
| 4400 | 500.1 | 1% |



Mechanical stop Cmin. at 5pF
 Mechanical stop Cmax. at 500pF



General handling information for the integrated drive

When installing or removing the integrated drive, extreme care must be taken to avoid damage to the body of the integrated drive. Although the integrated drive looks very rugged from the outside, it must be remembered that, due to the brazing process used to join ceramic and copper, the copper is in a soft, annealed condition and is therefore highly avoided. Use existing threads and holes for fixation. For all integrated drives, we recommend that one side be mounted non-rigid to prevent excessive thermomechanical and external forces from acting on the capacitor.

UNLESS OTHERWISE SPECIFIED:

≤ 30 : ± 0.5 $30 \sim 400$: ± 1.2 ≥ 400 : ± 2.5 $\angle \pm 1^\circ$

Address: ST28 Xihu Road, Kunshan, Jiangsu Province, China
 TEL: +86 (512) 36872110

Rev: 00

Web: www.glvac.com
 FAX: +86 (512) 36872122

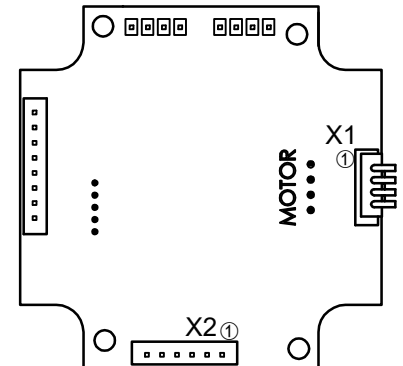
Page 2/3 Issue: 3-Jan-2024

E-mail: e-sales@glvac.cn
 Zip Code: 215333

Data-Sheet-Motorized Vacuum Capacitor
CKTBM500/8/57N1



| Drive Specification | |
|---------------------------|---------|
| Tuning speed (end to end) | < 3s |
| Backlash | ≤ 2 |
| Operation mode | Bipolar |
| Nr.of phases | 2 |
| Rated phase current(RMS) | 1.5A |
| Supply voltage(DC) | 24V |
| Full step angle | 1.8° |
| Motor frame size | 42mm |



X1 Motor

| | | |
|------|-----|----------|
| Pin1 | OB2 | Blue B- |
| Pin2 | OB1 | Red B |
| Pin3 | OA2 | Green A- |
| Pin4 | OA1 | Black A |

X2 Power and Communication

| | |
|------|-------------|
| Pin1 | 0V(GND) |
| Pin2 | 9V—30V(VDD) |
| Pin3 | |
| Pin4 | |
| Pin5 | RS232_TXD |
| Pin6 | RS232_RXD |

UNLESS OTHERWISE SPECIFIED:

≤30: ±0.5 30~400: ±1.2 ≥400: ±2.5 ∠ ±1°

Rev : 00

Page 3/3 Issue: 3-Jan-2024

Address: ST28 Xihu Road, Kunshan, Jiangsu Province, China
 TEL: +86 (512) 36872110

Web: www.glvac.com
 FAX: +86 (512) 36872122

E-mail: e-sales@glvac.cn
 Zip Code: 215333